

# HEIGHTS CHRISTIAN SCHOOLS

## Brea-Olinda Friends Christian Preschool and Infant Center

200 S. Associated Road, Brea, CA 92821 • (714) 990-8780 • Fax (714) 990-4879

Director: Sharon Thomas • Asst. Director: Lorraine Garcia

Facility #304270611, #300603820 • www.BreaChristianSchool.org

# February 2012



Dear Families,

As Valentine's Day approaches, let us focus on LOVE and where it all started. It started with the greatest gift God sent us, His son Jesus Christ. He proved His LOVE when He took all our sins to the cross. John 3:16 tells us, "God so loved the world that He gave His only begotten Son, that whoever believes in Him shall not perish but have eternal life."

We would like to encourage you to read I Corinthians 13, "The Love Chapter." What a wonderful definition of God's love for us and instructions for us on how to love one another. Remember, Jesus loves you and so do we!

In His Love,  
Miss Thomas & Miss Garcia

Upcoming School Dates	
February 13th	K Registration (Returning Families)
February 14th	Valentine's Day Classroom Parties Wear red or pink!
February 20th	Presidents' Day (Preschool Closed)
February 27th	Parent Appreciation Week
February 27th	K Registration (New Families)

**Refer a Friend!**

If you refer a friend to our preschool, and they enroll, you will both receive up to **one week FREE tuition!**

For example: if your friend enrolls for 5 full days, you will both get 5 full days FREE. If your friend enrolls for 3 full days, you will both get 3 full days FREE, etc.

**Thinking About Kindergarten?**

Do you wonder if your child is ready?  
Come join us for our  
*Kindergarten Readiness Presentation*  
to get your questions answered!

The presentation will be held at:  
**HCS-Brea Friends Campus**  
**Saturday, February 4th, @ 11:00am**  
during Open House!

Open House is 10am-1pm.  
Bring your whole family  
and bring a friend!

A flyer with details is available in the office.

**"I Love You, Jesus" Parties**  
**Tuesday, February 14th**

During the party, the children will exchange Valentine cards. Please have your child bring enough for the entire class (ask your teacher how many). Please have your child sign their name on the cards (you can help!), but do not address the card to any specific child. We suggest bringing them in the week before!



## Preschool Registration

2012/2013

- **March 19th** - Registration opens for returning families who want to re-register.
- **April 2nd** - Registration opens for new families who want to register for the first time.

Space is limited. Be sure to turn in your registration form plus \$50 for the re-registration fee to secure a spot!

We accept



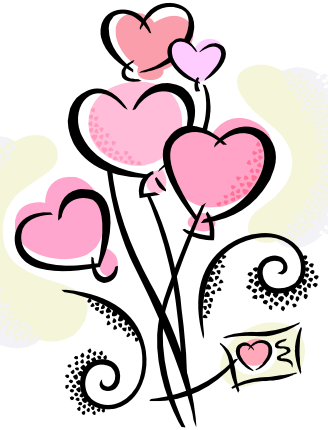
Visa • MasterCard • Discover

A \$7.00 convenience fee applies per transaction.

## Friendly Reminder

Please label all of your child's items. That way, lost items can be returned to the correct student.

*Thank You!*



## Tuition Reminders...

- Tuition is due every Monday.
- Any tuition not received by noon on Wednesday is considered late and will be charged a \$20.00 late fee.
- Late fees are due with the next Tuition payment.
- If you pay monthly, tuition is due the first Monday of the month.
- Accounts that are more than two weeks behind may result in withdrawing your child from school until the account is brought current.
- Please write your child's name on the memo line of your check as we have some families with the same name.

*Thank You!*



## Kindergarten Registration

Is your child turning 5 on or before November 1st? If so, it's time to consider Kindergarten!

Our school system offers a quality Kindergarten program taught by loving, qualified teachers. The academia consists of Bible, Math, Reading, Language, Computer, and Spelling in the mornings and Science, Social Studies, Art, PE, and Music in the afternoons.

We foster a positive, creative, Christian atmosphere that promotes learning and growth. Perhaps that's why our students continually test above the national average.



Early Bird Registration  
& Fees Deadline:  
February 25th

Spaces do fill up quickly. Testing must be completed prior to enrollment.

### Academic Schedule

Monday—Friday: 8:30 AM—3:00 PM

### Extended Day Care (optional)

Mornings: 6:30 AM—8:30 AM

Afternoons: 3:00 PM—6:00 PM

*We hope you'll allow us the privilege of teaching your child!*

